

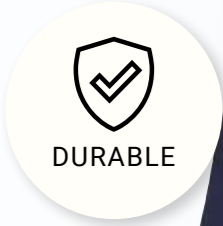
**CORPORATE
FASHION**
JAMES & NICHOLSON

**Logistics
& delivery**



All the advantages at a glance

AN OVERVIEW OF THE NUMEROUS FUNCTIONS OF OUR ARTICLES



THERE IS NO SECOND CHANCE FOR A FIRST IMPRESSION

Corporate identity is guaranteed with **corporate fashion**. Apart from strengthening your public image, it reinforces the sense of togetherness within the team. Be it staff or club member, corporate fashion unites people and therefore, each individual becomes a **brand ambassador**.

The brands **James & Nicholson** and **myrtle beach** offer a **functional design** with a **huge variety of colours and sizes**, which is long-term available, and the brands are perfect for your strong team appearance.



4 STEPS TO CORPORATE FASHION

STEP 1

SELECT ARTICLE

From head to toe, from function jacket to T-shirt matching in colour. A **wide colour range** and a **variety of models** make for a well-rounded corporate outfit for every company.

STEP 2

PERSONALIZATION

Every article of our collections is suitable for a convincing decoration. Print or embroidery – Your logo is definitely the centre of attention. Individualization is the key.

STEP 3

POSITIONING OF THE LOGO

Where do you want your advertising message to be? Our experts will advise you personally on the best position for your logo or slogan. You will find our **contact details** on the reverse of the catalogue.

STEP 4

JUST ORDER

Order via the **contact details** on the reverse of the catalogue.

CORPORATE FASHION

BY JAMES & NICHOLSON

*only selected articles



Our recommendations for you

We have put together a selection for you from the extensive J&N and MB range. We will be happy to advise you on other products.

Polos

pp 6-7



JN873
JN874

LADIES' | MEN'S
BIO WORKWEAR POLO



JN1805
JN1806

LADIES' | MEN'S
BIO STRETCH POLO
WORK - SOLID -

T-Shirts

pp 8-9



JN1807
JN1808

LADIES' | MEN'S
BIO WORKWEAR T-SHIRT



JN1803
JN1804

MEN'S | LADIES'
BIO STRETCH LONGSLEEVE
WORK - SOLID -

Sweat

pp 10-11



JN831

WORKWEAR HALF-ZIP
SWEAT



JN836

WORKWEAR
SWEAT JACKET



JN840

WORKWEAR
SWEATSHIRT

Vests

pp 12-13



JN881

WORKWEAR SOFTSHELL
LIGHT VEST - SOLID -



JN885

WORKWEAR SOFTSHELL
PADDED VEST - SOLID -

Jackets

pp 14-15



JN882

WORKWEAR SOFTSHELL
LIGHT JACKET - SOLID -



JN886

WORKWEAR SOFTSHELL
PADDED JACKET - SOLID -



JN1171
JN1172

LADIES' | MEN'S
SOFTSHELL JACKET

Fleece

pp 16-17



JN897
JN898

LADIES' | MEN'S
KNITTED WORKWEAR
FLEECE JACKET - SOLID -

Pants

pp 18-21



JN877

WORKWEAR CARGO PANTS



JN878

WORKWEAR PANTS
- SOLID -



JN880

WORKWEAR BERMUDAS
- SOLID -



JN1813

WORKWEAR PANTS
4-WAY-STRETCH SLIM LINE

Caps

pp 22-23



MB6234

6-PANEL WORKWEAR CAP
- SOLID -



MB6235

6-PANEL WORKWEAR CAP

JN873 XS-4XL
JN874 XS-6XL



Made with 50%
Organically Grown Cotton
Certified by CU853836

JN873 Ladies' BIO Workwear Polo
JN874 Men's BIO Workwear Polo

Easy-care, durable polo shirt

Mixed materials made of combed, ring-spun organic cotton and polyester for optimum shape-retention and washability | Knitted polo collar and sleeve cuffs | Neck tape | JN873: Button placket with 4 buttons, side slits | JN874: Button placket with 3 buttons | Washable up to 60 degrees, suitable for tumble drying

Outer fabric (200 g/m²): 50% cotton, 50% polyester



JN1805 XS-4XL
JN1806 XS-6XL



Made with 95%
Organically Grown Cotton
Certified by CU853836



Made with 84%
Organically Grown Cotton
Certified by CU853836

JN1805 Ladies' BIO Stretch-Polo Work - SOLID -
JN1806 Men's BIO Stretch-Polo Work - SOLID -

Polo shirt made of soft elastic piqué

Combed ring-spun organic cotton
Knitted polo collar and sleeve-bands, side slits
Washable at 40°C, suitable for tumble drying
JN1805: button placket with 4 buttons, lightly waisted
JN1806: button placket with 3 buttons

Outer fabric (210 g/m²): 94% cotton, 6% elastane
grey-heather: **Outer fabric (210 g/m²):** 84% cotton, 10% viscose, 6% elastane





JN1807 XS-4XL
 JN1808 XS-6XL

JN1807 Ladies' BIO Workwear T-Shirt
JN1808 Men's BIO Workwear T-Shirt

Hard-wearing and easy-care T-Shirt

Mixed fabrics: combed ring-spun organic cotton and polyester for optimum shape retention and washing resistance
 Neck band with elasthane, neck tape
 Washable at 60°C, suitable for tumble drying
 JN1807: V-neck, lightly waisted
 JN1808: round neckline

Outer fabric (160 g/m²): 50% cotton, 50% polyester



JN1803 XS-4XL
 JN1804 XS-6XL

JN1803 Ladies' BIO Stretch-Long-sleeve Work - SOLID -
JN1804 Men's BIO Stretch-Long-sleeve Work - SOLID -

Long-sleeved T-shirt made of soft elastic single jersey

Combed ring-spun organic cotton, round neckline
 Neck band with elasthane, neck tape
 Washable at 40°C, suitable for tumble drying
 JN1803: lightly waisted

Outer fabric (180 g/m²): 95% cotton, 5% elastane
grey-heather: Outer fabric (180 g/m²): 85% cotton, 10% viscose, 5% elastane



Sweat

JN831 XS-6XL



JN831 Workwear Half Zip Sweat

Sweatshirt with stand-up collar and zip

Durable easy-care cotton-polyester blend
Combed ring-spun cotton | Inside roughened
Elastic ribbed knitted bands on sleeve and waistband
Washable at 60 °C, suitable for tumble-drying

Outer fabric (290 g/m²): 70% cotton, 30% polyester



JN840 XS-6XL



JN840 Workwear Sweatshirt

Classic round neck sweatshirt

Durable, easy-care cotton/polyester mix
Combed ring-spun cotton | Inside roughened
Elastic ribbed bands on neckline, sleeves and waistband
60°C washable, suitable for tumble-drying

Outer fabric (290 g/m²): 70% cotton, 30% polyester



JN836 XS-6XL



JN836 Workwear Sweat Jacket

Sweat jacket with stand-up collar and zip

Durable, easy-care polyester/cotton mixture
Combed ring-spun cotton | Inside roughened
Elastic ribbed knitted bands on sleeve and waistband
2 side pockets with concealed zipper
60°C washable, suitable for tumble-drying

Outer fabric (290 g/m²): 70% cotton, 30% polyester





JN881 XS-6XL

JN881 Workwear Softshell

Light Vest - SOLID -



SOFT SHELL

YKK



After embroidery
100%
Maintenance of
breast-pocket
function*

Professional, light softshell vest in ,classic' look with high-quality details

Durable, light, hard-wearing softshell, inside interlock Wind- and water-repellent (2,000 mm water column) Breathable and permeable to water vapour (2,000g/m²/24h) Stand-up collar | Extended back | Elastic band on armhole Full-length concealed zip with storm flap and chin cup Zipped side pockets and inner pocket | Breast pockets with pocket pouch sewn on only on one side to facilitate decoration | Several inner pockets | Reflective elements (without protective function / no PPE) on pockets, shoulder and at the back | Zips: YKK

Buttons and zips: In order to avoid the product in hand being damaged, all the buttons and zips are concealed.

Outer fabric (250 g/m²): 100% polyester



JN885 XS-6XL

JN885 Workwear Softshell

Padded Vest - SOLID -



SOFT SHELL

YKK



After embroidery
100%
Maintenance of
breast-pocket
function*

Professional softshell vest with warm inner lining and high-quality details in ,classic' look

Durable, hard-wearing softshell | Wind- and water-repellent (2,000 mm water column) | Breathable and permeable to water vapour (2,000g/m²/24h) | Stand-up collar with soft fleece on the inside | Extended back | Full-length concealed zip with storm flap and chin cup | Zipped side pockets and inner pocket | Breast pockets with pocket pouch sewn on only on one side to facilitate decoration | Several inner pockets Reflective elements (without protective function / no PPE) on pockets, sleeves, shoulders and at the back Zip for decoration at the back | Zips: YKK

Buttons and zips: In order to avoid the product in hand being damaged, all the buttons and zips are concealed.

Outer fabric | Lining | Padding: 100% polyester



*only collection SOLID Style

Jackets

JN1171 XS-XXL
JN1172 S-3XL



JN1171 Ladies' Softshell Jacket

JN1172 Men's Softshell Jacket

Classic softshell jacket in sporty design made of recycled polyester

Pleasantly soft 3-layer function material with TPU-membrane | Wind- and water-proof (5,000 mm water column), breathable and permeable to water vapour | Seams not sealed | Inside made of micro fleece, mesh lining in the front | Stand-up collar | 2 side pockets and 1 breast pocket with zips | Full-length concealed 2-way zip with chin cup | Elastic cord on hem for width-adjustment | Zip for decoration at the front | Zips: YKK | JN1171: lightly waisted

Outer fabric (290 g/m²): 100% polyester (recycled)



JN882 XS-6XL



JN882 Workwear Softshell

Light Jacket - SOLID -

Professional, light softshell jacket in ,classic' look with high-quality details

Durable, light, hard-wearing softshell, inside interlock | Wind- and water-repellent (2,000 mm water column) | Breathable and permeable to water vapour (2,000g/m²/24h) | Stand-up collar | Ergonomically shaped sleeves, extended back | Inner sleeve bands | Full-length concealed zip with storm flap and chin cup | Zipped side pockets and inner pocket | Breast pockets with pocket pouch sewn on only on one side to facilitate decoration | Several inner pockets | Reflective elements (without protective function / no PPE) on pockets, shoulder and at the back | Zips: YKK

Buttons and zips: In order to avoid the product in hand being damaged, all the buttons and zips are concealed.

Outer fabric (250 g/m²): 100% polyester



JN886 XS-6XL



JN886 Workwear Softshell

Padded Jacket - SOLID -

Professional softshell jacket with warm inner lining and high-quality details in ,classic' look

Durable, hard-wearing softshell | Wind- and water-repellent (2,000 mm water column) | Breathable and permeable to water vapour (2,000g/m²/24h) | Stand-up collar with soft fleece on the inside | Extended back | Full-length concealed zip with storm flap and chin cup | Detachable and adjustable hood | Ergonomically shaped sleeves, inner sleeve cuffs | Zipped side pockets and inner pocket | Breast pockets with pocket pouch sewn on only on one side to facilitate decoration | Several inner pockets | Reflective elements (without protective function / no PPE) on pockets, sleeves, shoulders and at the back | Zip for decoration at the back | Zips: YKK

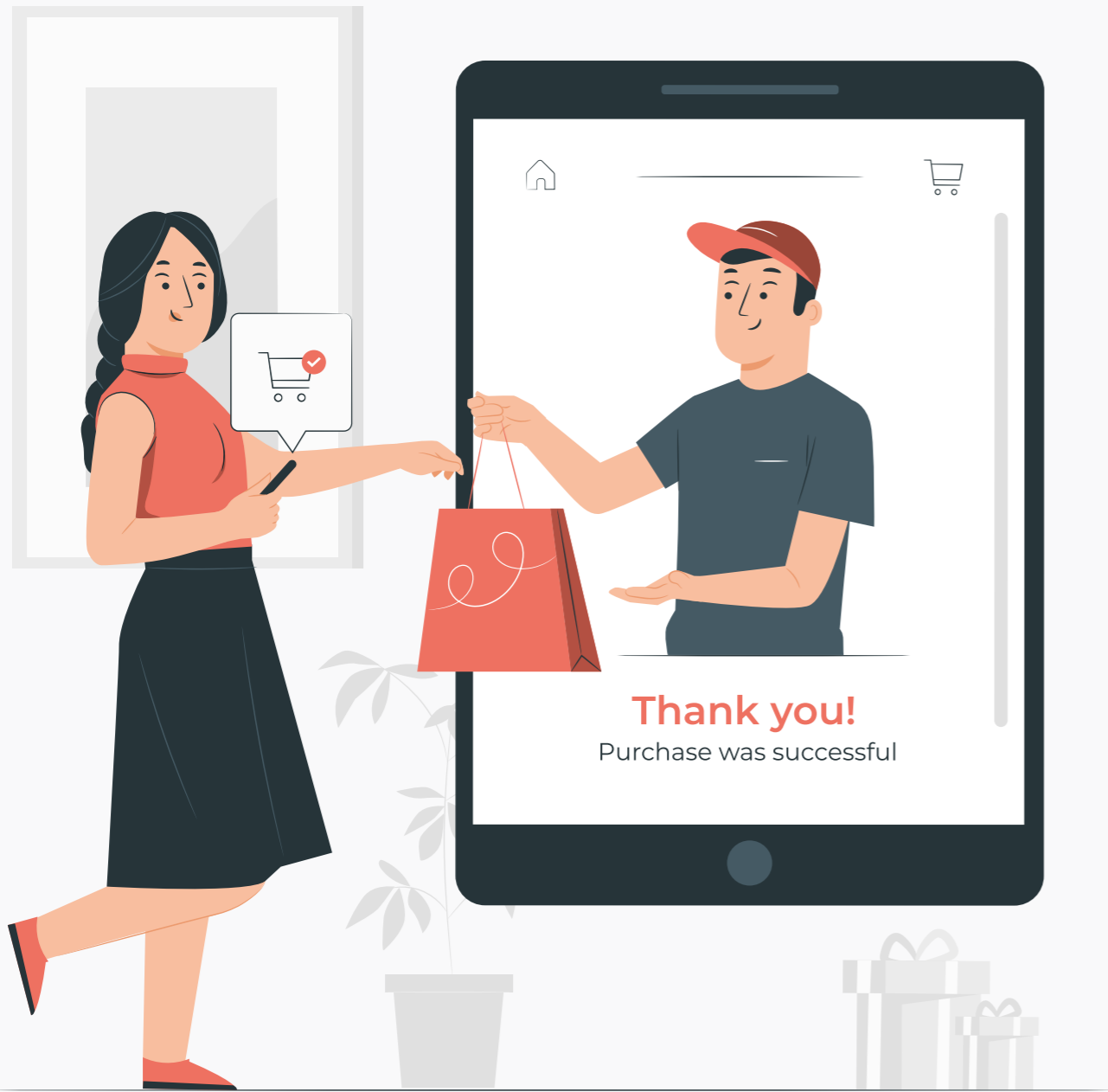
Buttons and zips: In order to avoid the product in hand being damaged, all the buttons and zips are concealed.

Outer fabric | Lining | Padding: 100% polyester



*only collection SOLID Style

Fleece



JN897 XS-4XL
 JN898 XS-6XL



JN897 Ladies' Knitted Workwear Fleece Jacket - SOLID -

JN898 Men's Knitted Workwear Fleece Jacket - SOLID -

Easy-care knitted fleece jacket

Soft, warm, easy-care fabric in melange look | Outside knitted look, inside roug-hened, soft and fluffy | 2 side pockets with concealed zip, 2 inner pockets
 Stand-up collar | Reflective elements (without protective function /no PPE) on zip, shoulder and at the back | Full-length concealed zip with chin cup
 Zips: YKK | JN897: lightly waisted

Outer fabric (280 g/m²): 100% polyester





JN878 SHORT 25-28
STANDARD 42-68
LONG 94-110



JN878 Workwear Pants - SOLID -

Functional work pants in ,classic' look with high-quality details

Durable, hard-wearing mixed fabrics | Elastic waistband with belt loops | Knee area reinforced with CORDURA® | Tearproof triple stitched seam | Front pockets, several tool pockets | 2 zipped pockets, mobile phone pocket | Ruler pocket and pen holders reinforced with CORDURA® | Reflective elements (without protective function / no PPE) on pockets, at the front and at the back | Zips: YKK | Washable at 60°C and suitable for tumble drying
Buttons and adjusters: In order to avoid the product in hand being damaged, all the buttons and zips are concealed.

Outer fabric (260 g/m²): 65% polyester, 35% cotton
Trimming: 100% polyamide



JN880 STANDARD 42-62



JN880 Workwear Bermudas - SOLID -

Functional work shorts in ,classic' look with high-quality details

Durable, hard-wearing mixed fabrics | Elastic waistband with belt loops | Tearproof triple stitched seam | Front pockets, several tool pockets | 2 zipped pockets, mobile phone pocket | Ruler pocket and pen holders reinforced with CORDURA® | Reflective elements (without protective function / no PPE) on pockets | Zips: YKK | Washable at 60°C and suitable for tumble drying
Buttons and adjusters: In order to avoid the product in hand being damaged, all the buttons and zips are concealed.

Outer fabric (260 g/m²): 65% polyester, 35% cotton
Trimming: 100% polyamide



JN877 SHORT 25-28
STANDARD 42-68
LONG 94-110



JN877 Workwear Cargo Pants

Cargo pants for work and leisure

Durable, hard-wearing, comfortable mixed fabrics with BIONIC FINISH®ECO | Waistband with belt loops
Tearproof triple stitched seam | 2 front pockets, 2 back pockets | 2 cargo pockets with ruler pocket, mobile phone pocket, pen holder | Zip: YKK
Washable at 60 °C, suitable for tumble-drying

Outer fabric (280 g/m²):
64% polyester, 33% cotton, 3% elastane



JN1813 SHORT 25-28
STANDARD 42-64
LONG 94-110

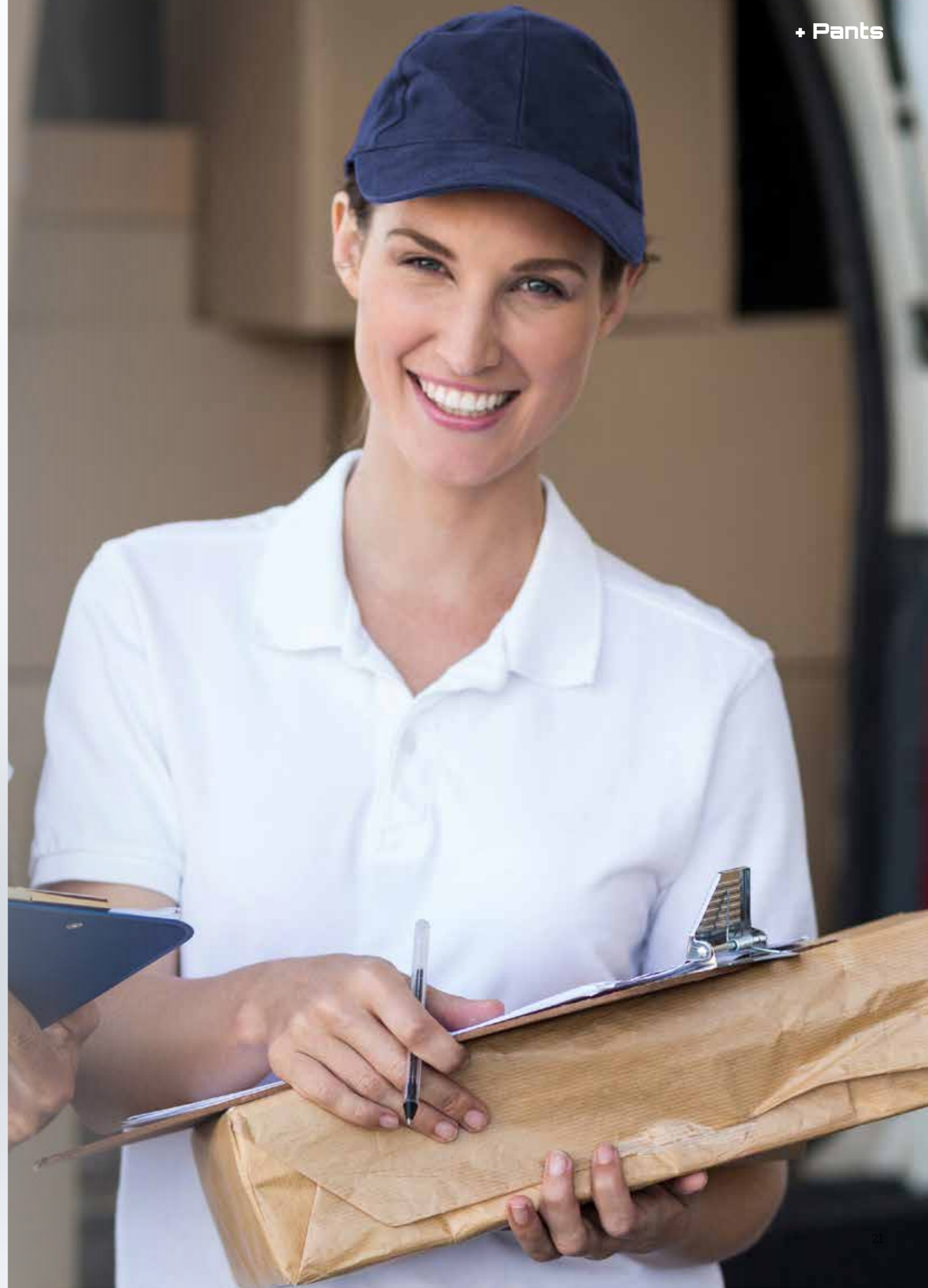


JN1813 Workwear Pants 4-Way Stretch Slim Line

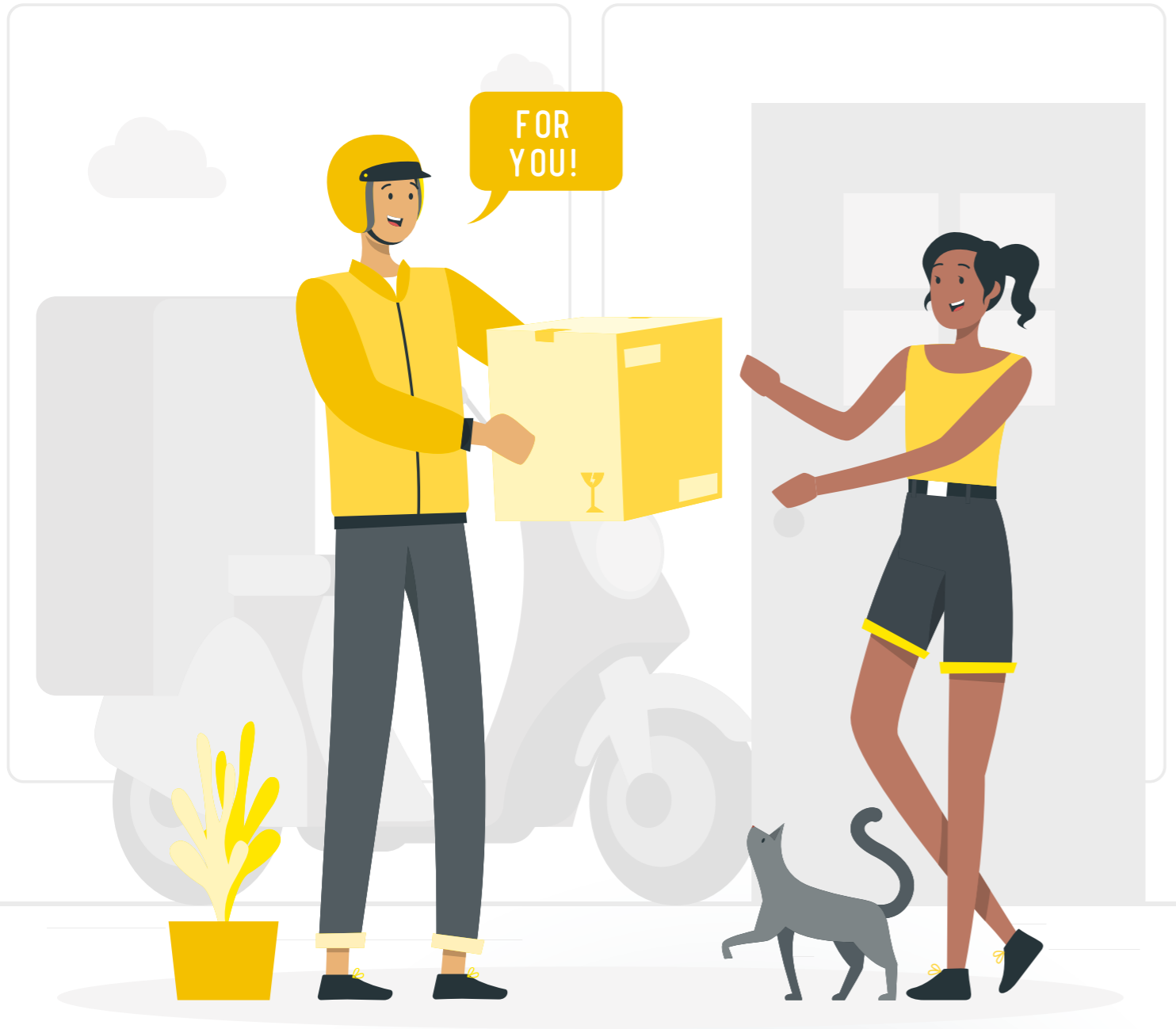
Modern work pants in slim profile with functional details

Durable, elastic 4-way stretch with a high elastane content for optimum fit and freedom to move | Waistband with belt loops | Ergonomically shaped knee pad pocket reinforced with CORDURA® | Tearproof triple stitched seam
Pockets, several tool pockets | Ruler pocket, pen holder
1 zipped pocket | Zips: YKK

Outer fabric (205 g/m²): 73% polyamide, 17% cotton, 10% elastane
Trimming: 80% polyamide, 15% polyester, 5% elastane



Caps



MB6234 one size



MB6234 6 Panel Workwear Cap

- SOLID -

High-quality 6 panel cap with reflective elements
(without protective function/no PPE)

Recycled polyester | 6 embroidered ventilation holes
6 decorative stitching lines on the peak | Laminated front panels | Pleasant to wear thanks to padded sweatband
Clip adjuster in mat silver with metal eyelet

Outer fabric: 100% polyester (recycled)



MB6235 one size



MB6235 6 Panel Workwear Cap

- COLOR -

6 panel cap with sun protection

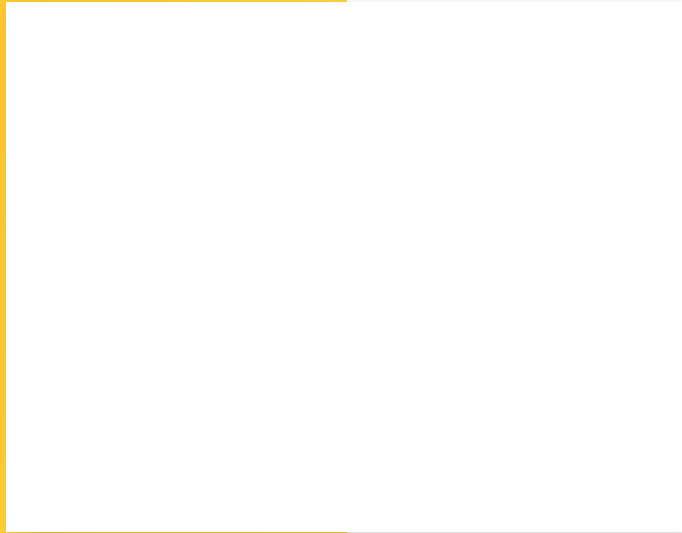
Hard-wearing fabric | 6 embroidered ventilation holes
6 decorative stitching lines on the peak | Laminated front panels | Pleasant to wear thanks to padded sweatband
Clip adjuster in mat silver with metal eyelet

Outer fabric: 100% polyester



logistics & delivery

EN



**CORPORATE
FASHION**

JAMES & NICHOLSON

